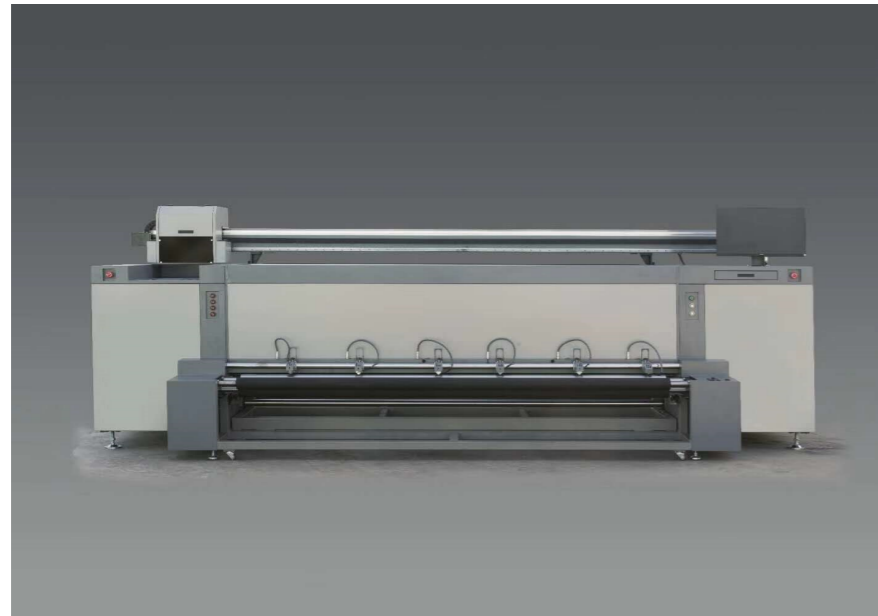


MACHINE FEATURES:



- Fabric supply system:** feeding fabric by rubber roller clamping, no indentation, no wrinkle, no deviation
- Tension system:** high precision gear transmission at the both end to keep fabric smooth, stable and accurate.
- Position system:** High accurate magnetic grid to keep machine clean, long life, free maintenance, high precision running.
- Patent System 1:** Automatic up & down system to collect waste ink, one button to control up & down to change fabric, then no ink waste any more. Meanwhile, intelligent negative ink misting system to reduce waste ink flying.
- Patent System 2:** fabric guide roll with up & down system inside of colour curing device to control curing time accurately, no color burning while machine stop, easy to load fabric. Also, curing chamber seal no smoke leakage.
- Patent System 3:** Fume extracting system, completely smoke free processing inside, no any smell, first patent in Chinese market.

TECHNICAL DATA

Machine model	LC-2100 flagship
Printing head	EPS3200 EPSON Industrial Sprayer
Head Nos.	4 ~ 6 ~ 8
Print width	2100mm
Material width	2100mm
Ink type	Thermal sublimation Dye-sublimation ink
Ink color	C M Y K
Print accuracy	360*1200dpi 360*1800dpi 720*1200dpi
Print mode	Unidirectional / Bidirectional
Data transmission	Gigabit port
Printing speed:	Four heads: production mode - 140 ² m/H quality mode - 95 ² m/H precision mode - 70 ² m/H
	Six heads: production mode - 170 ² m/H quality mode - 115 ² m/H precision mode - 85 ² m/H
	Eight head: production mode - 210 ² m/H quality mode - 140 ² m/H precision mode - 105 ² m/H
Cleaning system	Positive Pressure Ink Cleaning
Output software	PhotoPrint
Print formats	BITMAP, TIFF, Quark Xpress, Eps, PDF, etc.
Color control	ICC Color Profile
Input voltage	Single Phase 220V 10% (AC 50 / 60HZ)
Working environment	Temperature 20 °C-28 °C, humidity 40%-70% rh
Machine weight	1000KG
Machine size	3820mm (L/length) x 1280mm (W/ width) x 1470mm (H/ Height)
Applicable materials	flag cloth, banner cloth, warp knitted cloth, silver carving, tribute satin, chemical fiber fabric.